

RECEIVED: 29/08/2024



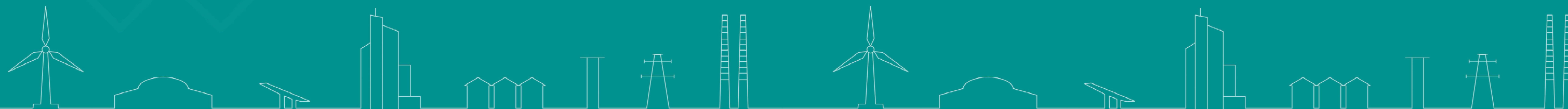
macroworks

LVIA PHOTOMONTAGES

Keerglen Wind Farm
Book 2: VP13 - VP23 and Comparative Views

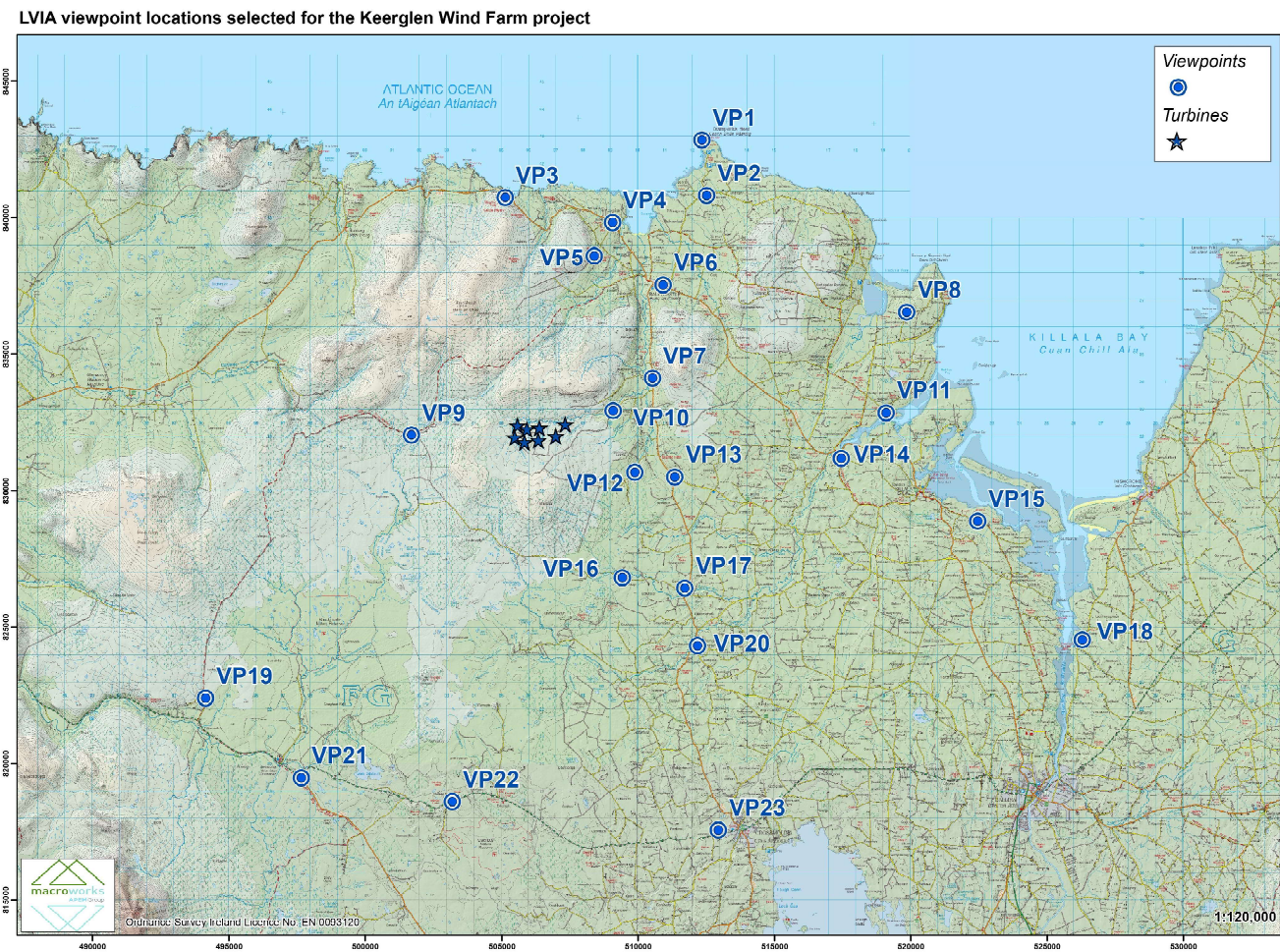
This book contains imagery for the
viewpoints chosen for the LVIA study

June 2024



LVIA | TVIA | Landscape Design | Visibility Analysis | Glint and Glare | Verified Photomontages | CGI | Shadow Flicker Analysis

Index of Imagery



VP13: R315 at Creevagh More
Page 1: Baseline (Contextual Wireline and Photo)
Page 2: Wireline
Page 3: Photomontage

VP14: Local Road at Castlereagh (Eurovelo)
Page 1: Baseline (Contextual Wireline and Photo)
Page 2: Wireline
Page 3: Photomontage

VP15: Western Way at Moyne Abbey
Page 1: Baseline (Contextual Wireline and Photo)
Page 2: Wireline
Page 3: Photomontage

VP16: Local Road at Carnlough
Page 1: Baseline (Contextual Wireline and Photo)
Page 2: Wireline
Page 3: Photomontage

VP17: R315 at Garanard
Page 1: Baseline (Contextual Wireline and Photo)
Page 2: Wireline
Page 3: Photomontage

VP18: L2605 at Killanly
Page 1: Baseline (Contextual Wireline and Photo)
Page 2: Wireline
Page 3: Photomontage

VP19: Western way at Ballmonnelly
Page 1: Baseline (Contextual Wireline and Photo)
Page 2: Wireline
Page 3: Photomontage

VP20: Moygownagh New Cemetery
Page 1: Baseline (Contextual Wireline and Photo)
Page 2: Wireline
Page 3: Photomontage

VP21: Junction of N59 / and R312 (Western Way)
Page 1: Baseline (Contextual Wireline and Photo)
Page 2: Wireline
Page 3: Photomontage

VP22: N59 at Dooleeg More
Page 1: Baseline (Contextual Wireline and Photo)
Page 2: Wireline
Page 3: Photomontage

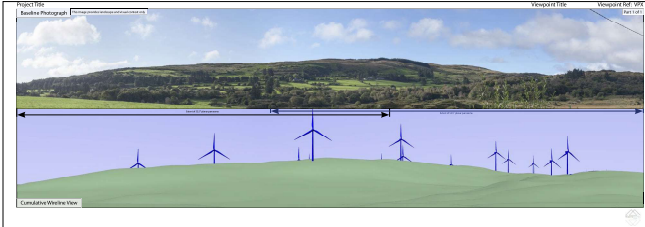
VP23: St . Tiernan's Cemetery Crossmolina
Page 1: Baseline (Contextual Wireline and Photo)
Page 2: Wireline
Page 3: Photomontage

RECEIVED: 29/08/2024

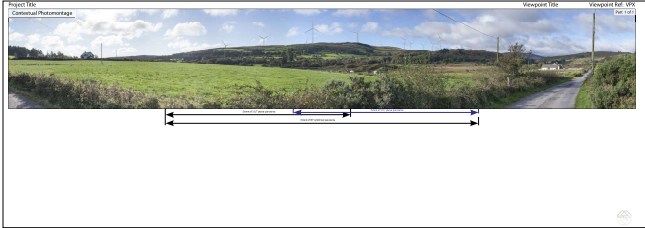
RECEIVED: 29/08/2023

How photomontages are presented for each viewpoint

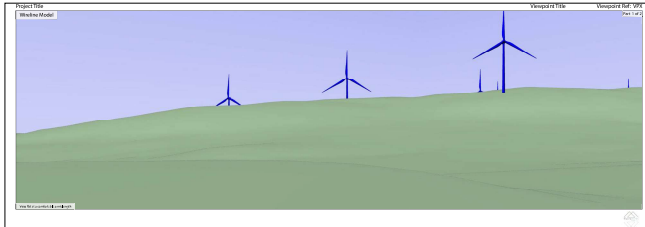
Sheet 1: 90° Baseline panorama and matching wireline



Sheet 2 (provided where necessary): Contextual Panoramic Photomontage View (120° - 180°)



Sheet 3: 53.5° Wireline View



Sheet 4: 53.5° Panoramic Photomontage View



What is Displayed

90° Baseline Panorama Photograph and matching Cumulative Wireline (Cylindrical Projection - to be viewed curved):

The top image depicts a 90° (included angle) Baseline panorama generated from captured photography.

The bottom image depicts a 90° (included angle) matching computer generated wireline. This image includes the proposed wind farm development and includes other cumulative wind farm developments (existing and/or permitted wind farm developments in the public domain and projects in the planning system pending a decision from a planning authority). Extent bars indicate the extent of the 53.5° Panoramic Photomontage/Wireline Views within the depicted 90° Baseline views.

Information relating to the viewpoint, proposed development and photography capture are included. A small thumbnail map is included which indicates the location of the viewpoint and the direction and extent of the depicted view. A coloured legend referencing turbines are also included to help distinguish the proposed turbines from the other cumulative turbines.

Contextual Panoramic Photomontage View (ranging from 120° to 180°) (Cylindrical Projection - to be viewed curved):

The image demonstrates a contextual panoramic photomontage view (ranging from 120° to 180° included angle) which is generated from captured photography. It includes the proposed wind farm development and includes only other existing cumulative wind farm developments. Extent bars indicate the extent of both the 53.5° Panoramic Photomontage/Wireline Views and the 90° Baseline Views within the depicted Contextual Panoramic Photomontage View.

Information relating to the viewpoint, proposed development and photography capture are included. A small thumbnail map is included which indicates the location of the viewpoint and the direction and extent of the depicted view.

53.5° Wireline View (Planar Projection - to be viewed flat)

This image shows a 53.5° (included angle) Wireline View which matches the 53.5° Panoramic Photomontage View. It includes the proposed wind farm development and includes other cumulative wind farm developments (existing and/or permitted wind farm developments in the public domain and projects in the planning system pending a decision from a planning authority). Wirelines are computer-generated images which depict the 'bare ground' terrain along with the proposed wind farm development and other cumulative wind farms developments within the depicted view. They are generated in GIS (Geographic Information System) mapping software based from a DTM (Digital Terrain Model).

Information relating to the viewpoint, proposed development and photography capture are included. A small thumbnail map is included which indicates the location of the viewpoint and the direction and extent of the depicted view. A coloured legend referencing turbines are also included to help distinguish the proposed turbines from the other cumulative turbines.

53.5° Panoramic Photomontage View (Planar Projection - to be viewed flat):

This image demonstrates a 53.5° (included angle) photomontage generated from captured photography. It includes the proposed wind farm development and includes only other existing cumulative wind farm developments.

Information relating to the viewpoint, proposed development and photography capture are included. A small thumbnail map is included which indicates the location of the viewpoint and the direction and extent of the depicted view.

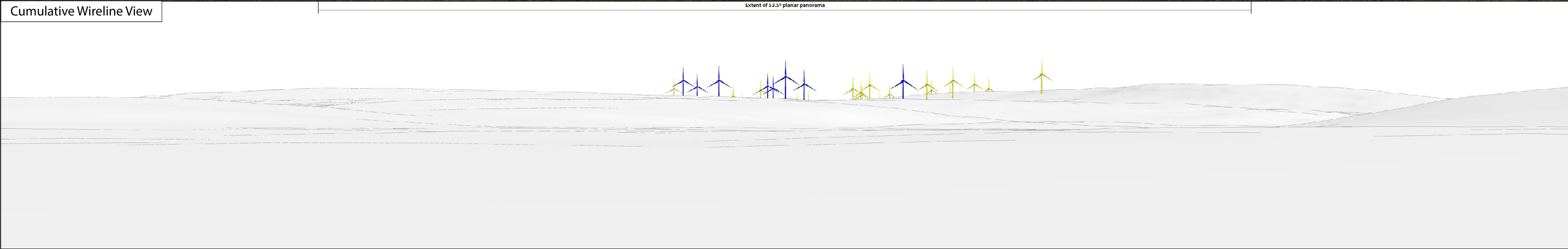
Rationale

As required by the SNH guidelines, the purpose of the baseline panorama and wireline is to provide wider landscape and visual context to help the viewer understand where development sits within the wider landscape. The wireline also illustrates cumulative effects and provides the viewer with the full cumulative context. The baseline panorama is not intended to represent how large or small the turbines will appear in reality or how close they will appear to the viewer.

An additional page not required by the guidelines, this contextual photomontage view is included to give a broader context to the viewer. It is generally included where there are multiple 90° and 53.5° views, which are required by the guidelines, for a particular viewpoint.

As required by the SNH guidelines, the A1 wireline is intended to provide the best impression of the apparent size of the turbines and the distance to the development from the viewpoint location. It illustrates the 'bare ground' visibility and a provide a clear view of the wind farm to inform the assessment. **Only images at this scale, held at a comfortable arms length, should be used when trying to understand the size of the development and its distance from the viewpoint.**

As required by the SNH guidelines, the A1 panorama is intended to provide the best impression of the apparent size of the turbines and the distance to the development from the viewpoint location. **Only images at this scale, held at a comfortable arms length, should be used when trying to understand the size of the development and its distance from the viewpoint.**



This cylindrical projection panorama has been captured, prepared and presented in accordance with the guidance set out in the Scottish Natural Heritage 2017 guidance 'Visual Representation of Wind Farms'.

- Proposed Turbines
- Existing Turbines
- Permitted Turbines
- In - Planning Turbines
- Pre - Planning Turbines



National Grid Coordinate (ITM)
Easting: 511351
Northing: 830514
Elevation: 49.5 m

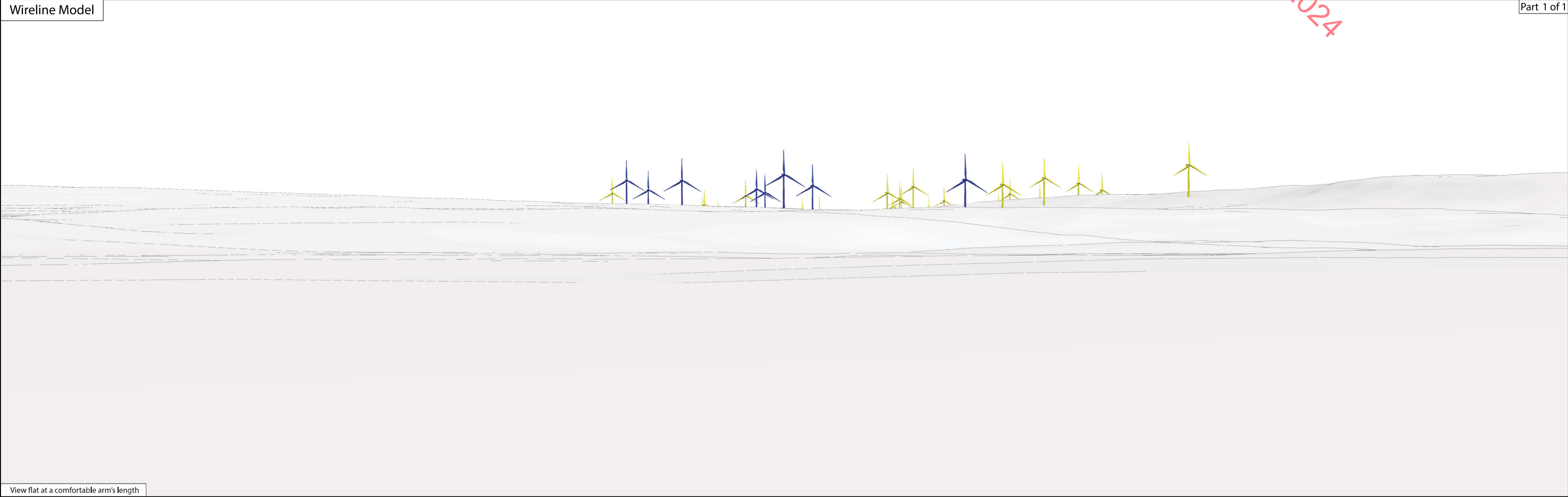
Horizontal Field of View: 90 ° (cylindrical projection)
Principal Distance: 522 mm
Turbine Tip Height: 180m
Turbine Hub Height: 105m
Turbine Rotor Diameter: 150m

Date and Time: 23/03/2022 09:39
Camera: Canon 5D Mark II
Lens: Fixed 50mm
Camera Height: 1.7m (AGL)

Direction (clockwise from Grid N):
Distance to Nearest Visible Turbine:
Nearest Turbine:

288 °
4.4 km
T8





This planar projection panoramic model has been prepared and presented in accordance with the guidance set out in the Scottish Natural Heritage 2017 guidance 'Visual Representation of Wind Farms'.

- Proposed Turbines
- Existing Turbines
- Permitted Turbines
- In - Planning Turbines
- Pre - Planning Turbines



National Grid Cordinate (ITM)
Easting: 511351
Northing: 830514
Elevation: 49.5 m

Horizontal Field of View: 53.5° (planar projection)
Principal Distance: 812.5 mm
Paper size: (half A1) 841 x 297 mm
Correct printed image size: 820 x 260 mm

Date and Time: 2022/03/23 09:39
Camera: Canon 5D Mark II
Lens: Fixed 50mm
Camera Height: 1.7m (AGL)

Direction (clockwise from Grid N): 288°
Distance to Nearest Visible Turbine: 4.4 km
Nearest Turbine: T8





View flat at a comfortable arm's length

This planar projection panorama has been captured, prepared and presented in accordance with the guidance set out in the Scottish Natural Heritage 2017 guidance 'Visual Representation of Wind Farms'.



National Grid Cordinate (ITM)
Easting: 511351
Northing: 830514
Elevation: 49.5 m

Horizontal Field of View: 53.5° (planar projection)
Principal Distance: 812.5 mm
Paper size: (half A1) 841 x 297 mm
Correct printed image size: 820 x 260 mm

Date and Time: 2022/03/23 09:39
Camera: Canon 5D Mark II
Lens: Fixed 50mm
Camera Height: 1.7m (AGL)

Direction (clockwise from Grid N):
Distance to Nearest Visible Turbine:
Nearest Turbine:

288°
4.4 km
T8

